

# Lake Villa Township Assessor's Office



Jeffrey A. Lee, C.I.A.O./S Assessor

37850 N. IL Route 59

Lake Villa, IL 60046

Office: 847-356-2383 Fax: 847-356-4471

Email: [assessor@lakevillaassessor.org](mailto:assessor@lakevillaassessor.org)

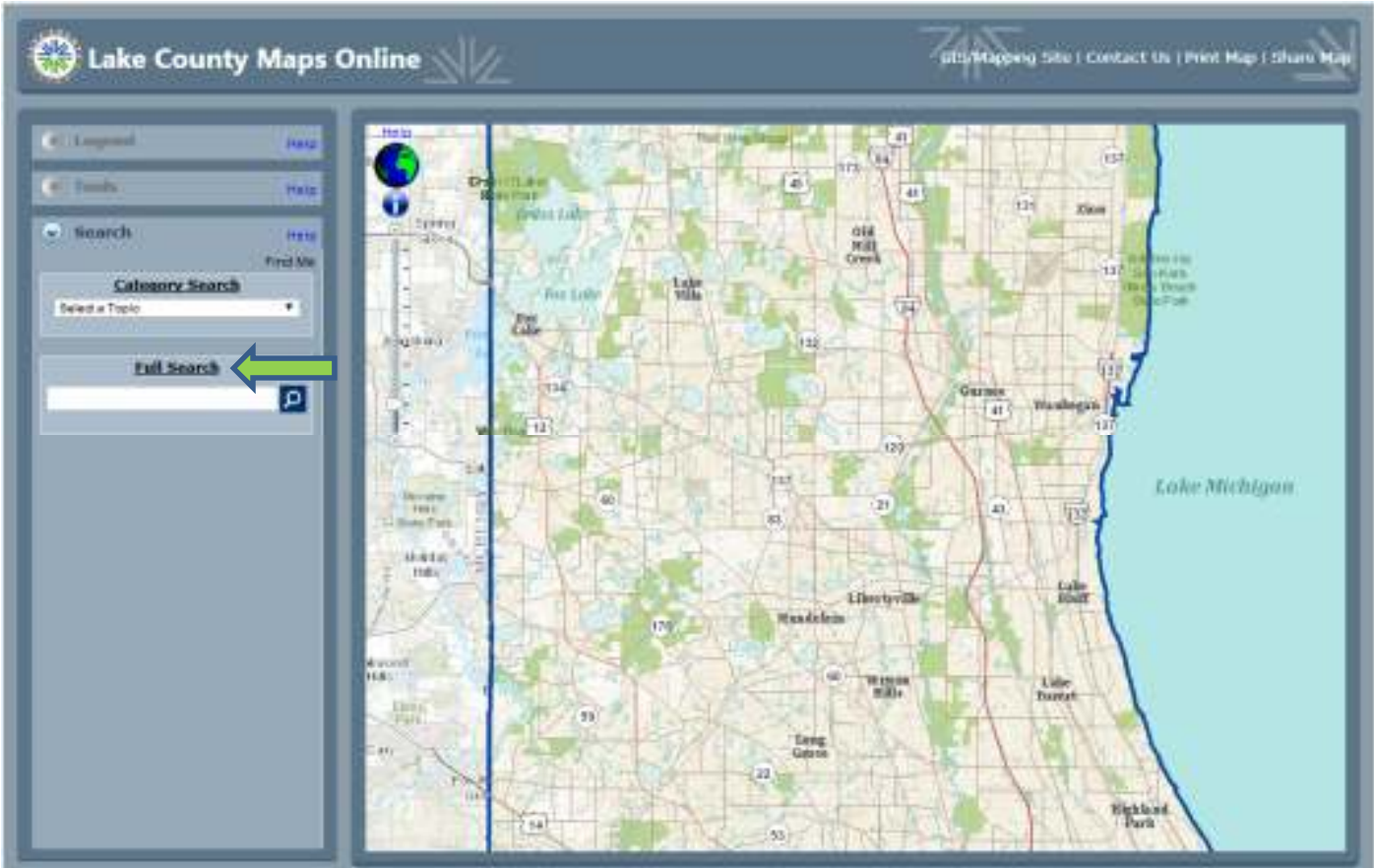
## MAPS ONLINE BASIC USER GUIDE

Web site address: [www.lakecountylil.gov](http://www.lakecountylil.gov)

The screenshot shows the Lake County website interface. At the top, there is a search bar and a navigation menu with tabs for 'I Want To...', 'County Government', 'About Our County', 'Residents', 'Business', 'Visitors', and 'Lake County'. Below the navigation is a banner image of a traffic management center. A secondary navigation bar contains tabs for 'News', 'County Board', 'Property Tax', 'Jobs & Doing Business', 'Services', 'Connect', and 'Transparency'. The 'Property Tax' tab is selected and highlighted. Below this, there is a search bar for property information with a 'GO' button. To the right of the search bar are several service categories with icons and lists of links: 'Property Values & Exemptions (Assessor's Office)', 'Tax District Levies & Rates and Tax Redemption (County Clerk)', 'Tax Bills (Treasurer's Office)', 'Appeals (Assessor's Office)', 'Records (Recorder's Office)', and 'Maps (GISMapping Division)'. Green arrows point to the 'Property Tax' tab, the search bar, the 'GO' button, and the 'Maps (GISMapping Division)' link.


There are two ways to access Maps Online. Click on the **Property Tax tab** and then click on the **Maps Online** link or enter your PIN or street address in the **search bar** on the left and click **Go**. Then click on **Get more details about your property**.

Clicking **Maps Online** will bring up the Maps homepage. If you used the **search bar** and clicked on **get more details about your property**, maps will open showing the property information you searched as well as showing the property outlined on the map.



**Full Search**

Works just like Google and Bing!

Enter a search string; click the  to search, or press enter.

Example Searches:

PIN: 08-21-410-004 or 0821410004

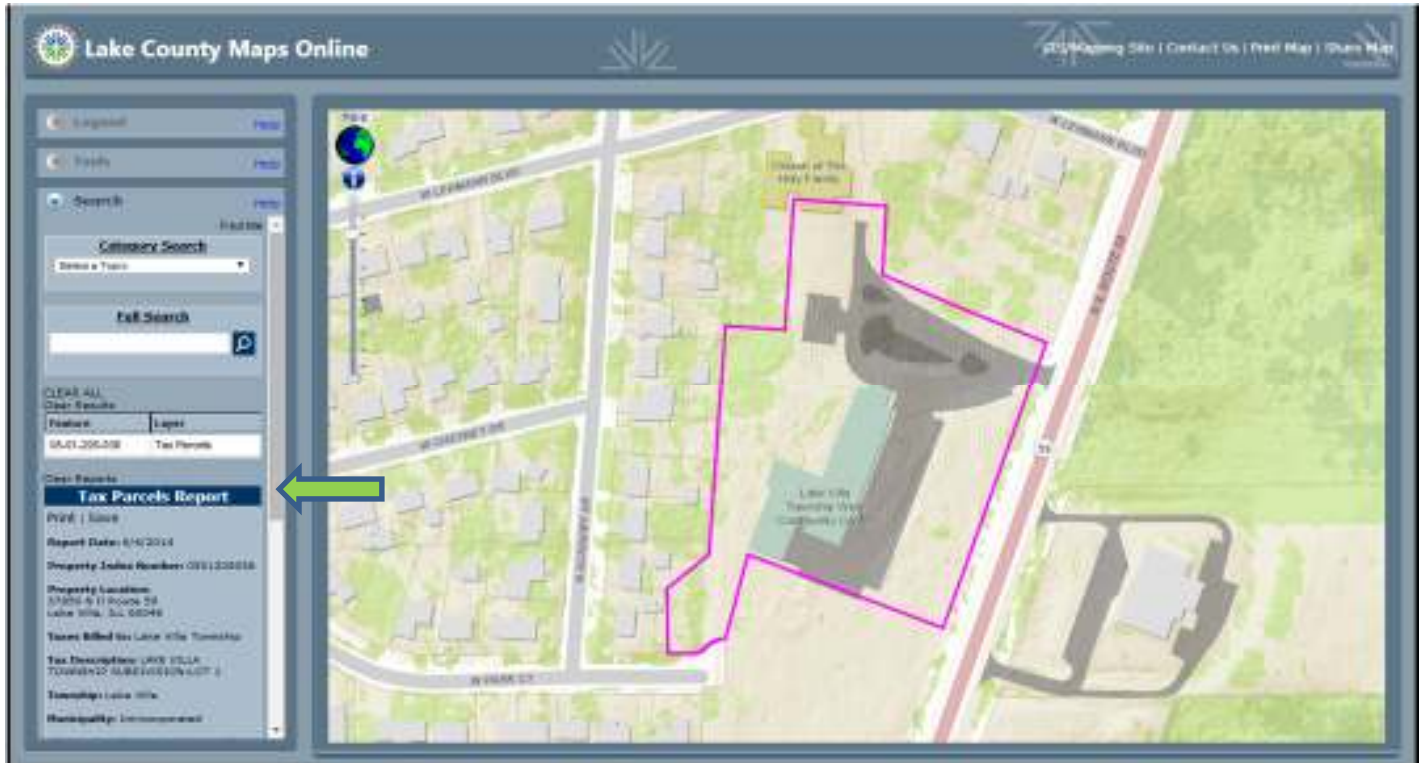
Street Intersection: Maple – Elm; Hunt Club – 120

Section Township Range: 054610

State Plane Coordinates: 1119403.00250297 2074509.1179427

Latitude Longitude (Decimal Degrees) 42.3609116502885 -87.8332699135632

The hint table will provide feedback on your search string. If search returns multiple results, choose the result you want by clicking on that row in the grid.



After you enter your search information you will see the Tax Parcels Report and the map will outline the parcel.

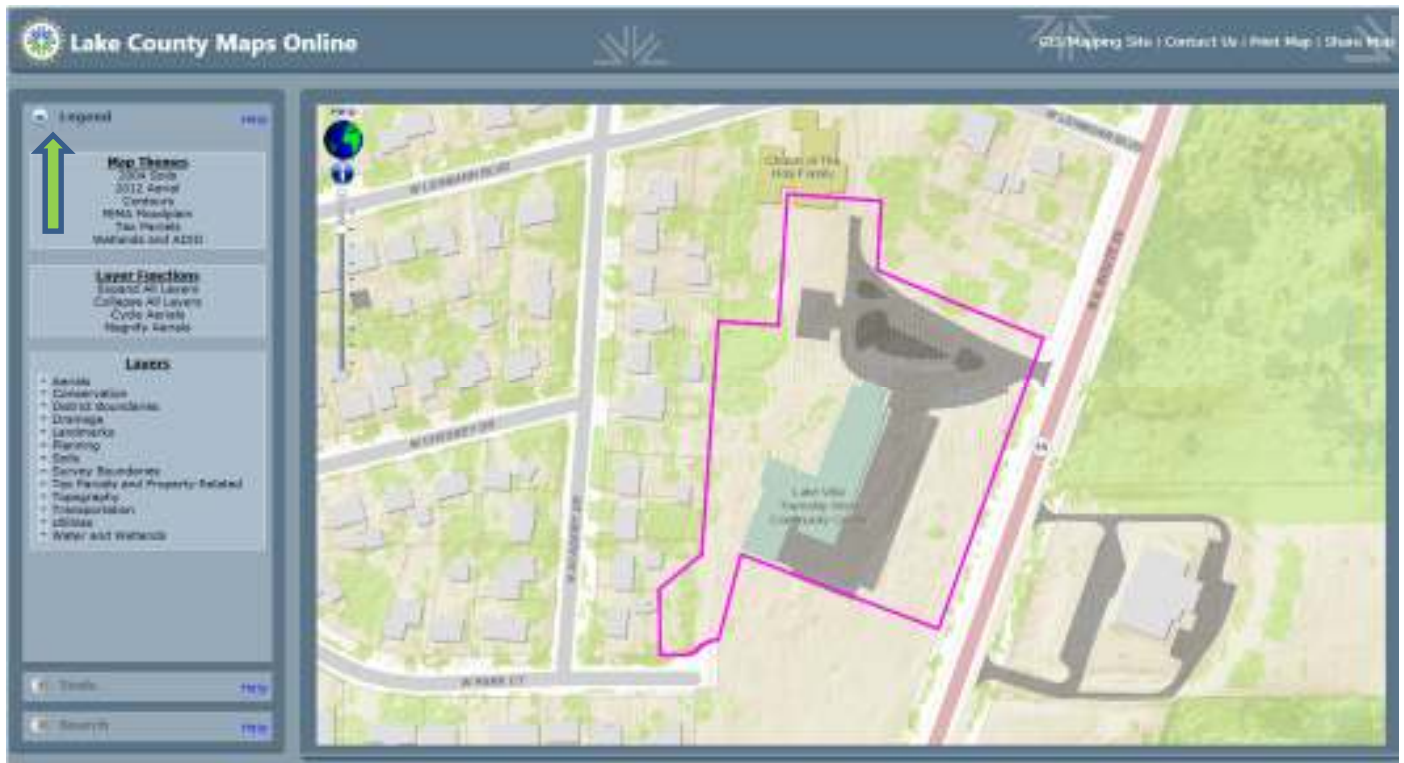


For additional information on the selected parcel you can click **District Information, Assessment Information, Property Characteristics, or Environmental Summary.**

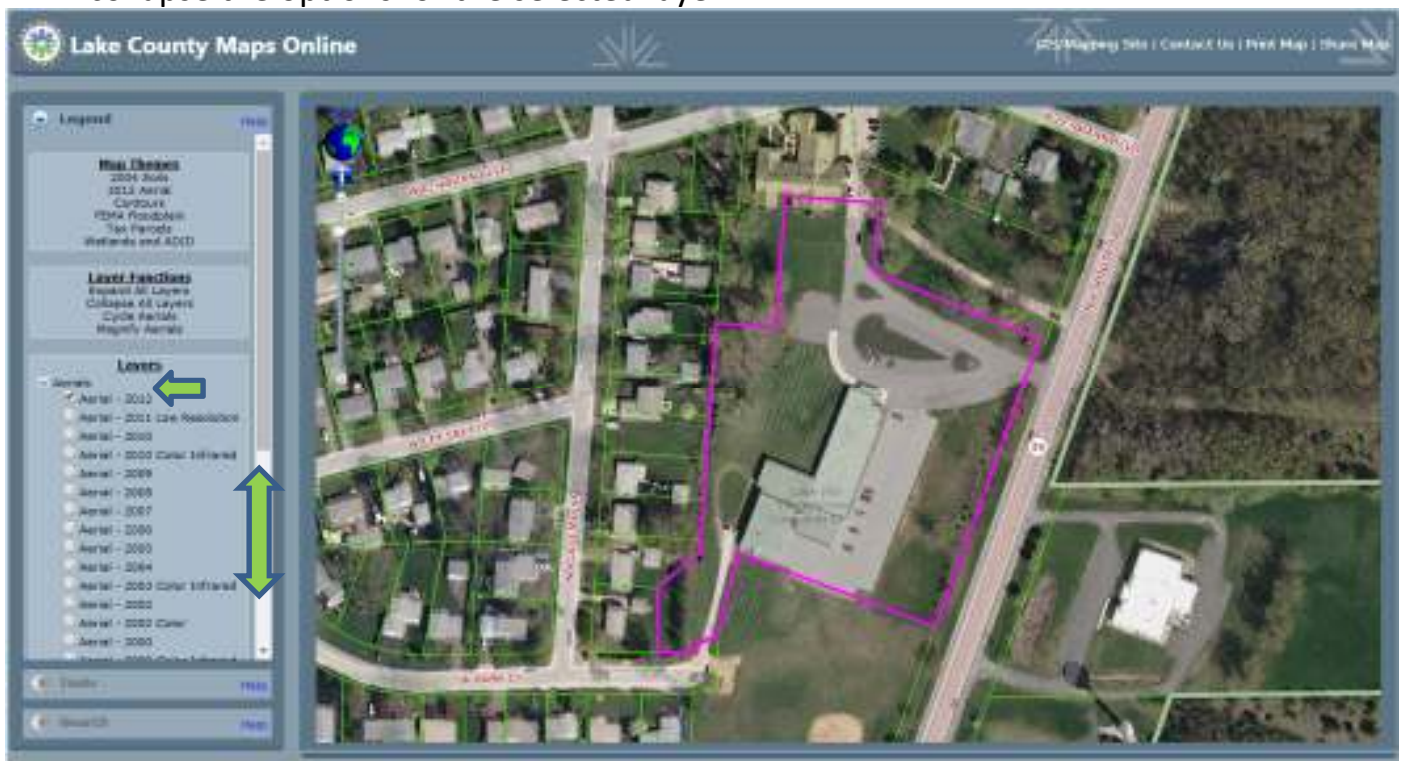
You may also click on any of the lines under **Additional Parcel Info** such as **View Tax Map, Property Assessment Info, Tax Bill Information, or Street View / Oblique View.**

By clicking **Help** in any category will give you further assistance with the features available to you in that category.

\*If you are having issues with pages not opening after selecting a link you may need to turn off the pop up blocker in your web browser. Each web browser such as Internet Explorer, Mozilla Firefox or Google Chrome have different methods of disabling pop up blockers. We suggest using your browsers help features to learn how to disable the pop up blocker.\*

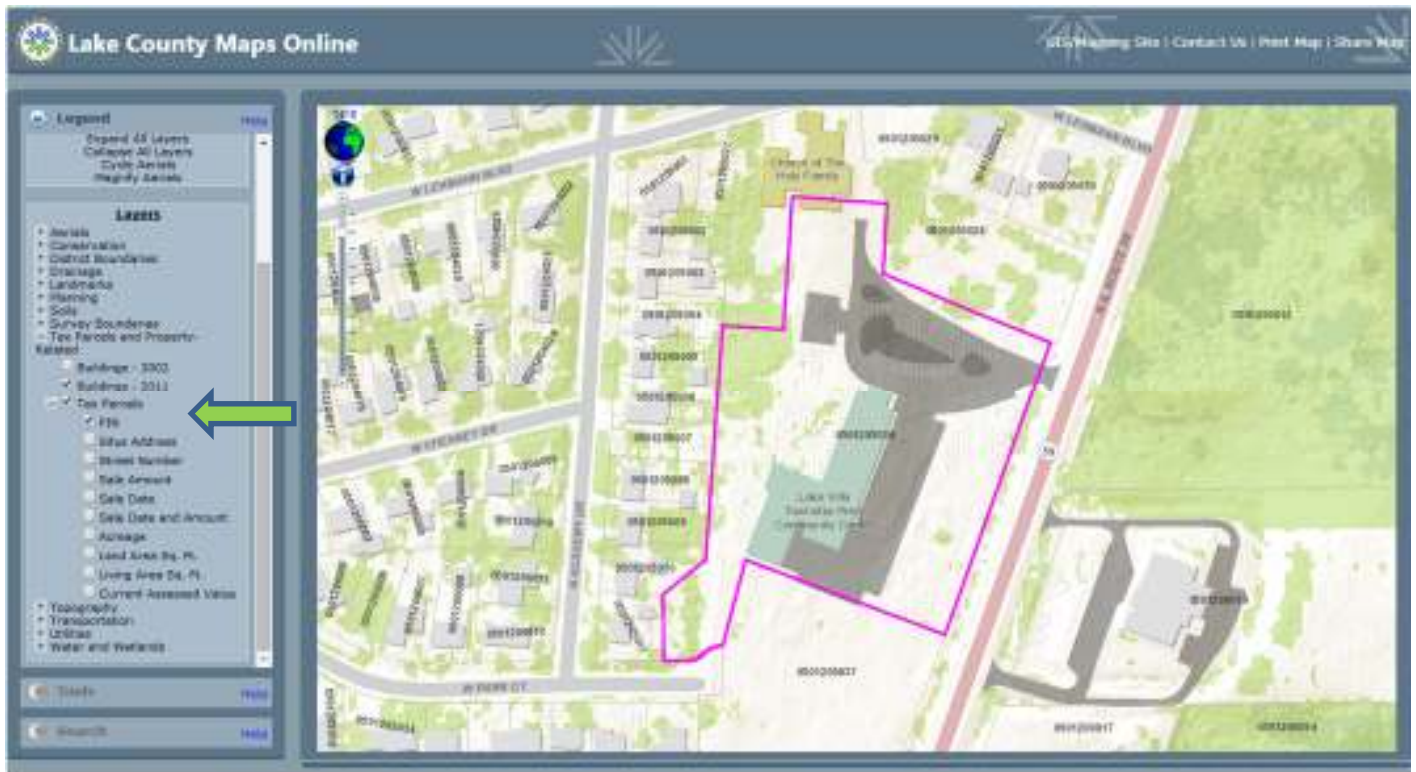


In the above image by clicking on the Legend category a new drop down menu will open. In this menu the **Layers** option is what you want to use. By clicking on the + sign next to the word(s) you will open options for adding overlays (layers) to the map. For example in the below image **Aerials** was selected and then **Aerials – 2012**. By clicking the – sign you will collapse the options for the selected layer.



If you wish you can also use the slider in the menu to show additional Layers with out collapsing each option.

In the below image the **Tax Parcels and Property Related** option was selected. Then **Tax Parcels** and **PIN** was selected which adds PIN numbers as an overlay (layer) on the map. It's important to note that only one overlay can be displayed on the map at a time.



As an additional example the below image shows the **Situs Address** overlay (layer) with the Aerial map. The Aerial map can be used in addition to most overlays (layers). To select different overlays (layers) simply click on the box next to the information you want displayed on the map.

